



# Der Beruf ZeichnerIn Fachrichtung Ingenieurbau



## Planen und Konstruieren





# Besprechen



# Baukontrollen

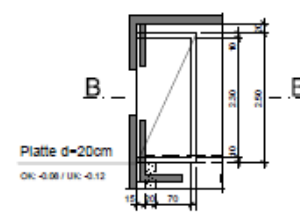


# Hochbau

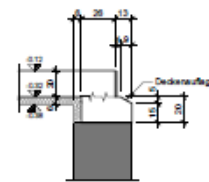




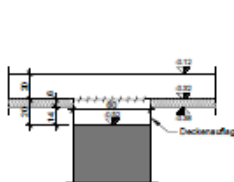
Grundriss 1:50  
- Platte -



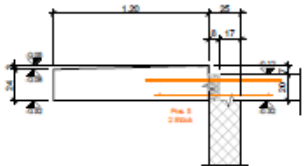
Schnitt D - D 1:20



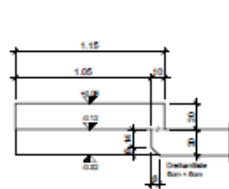
Schnitt E - E 1:20



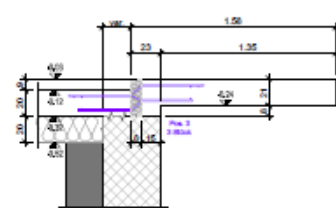
Schnitt A - A 1:20



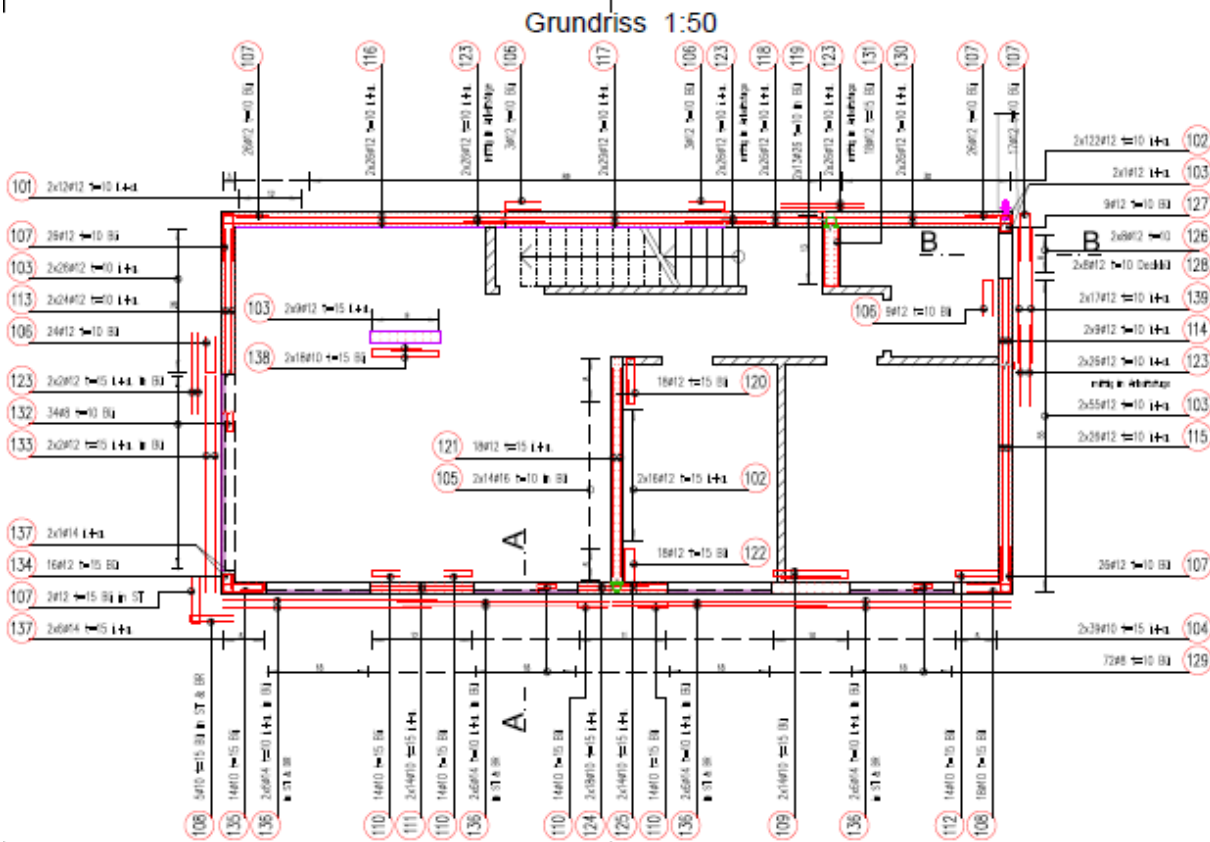
Schnitt B - B 1:20



Schnitt C - C 1:20





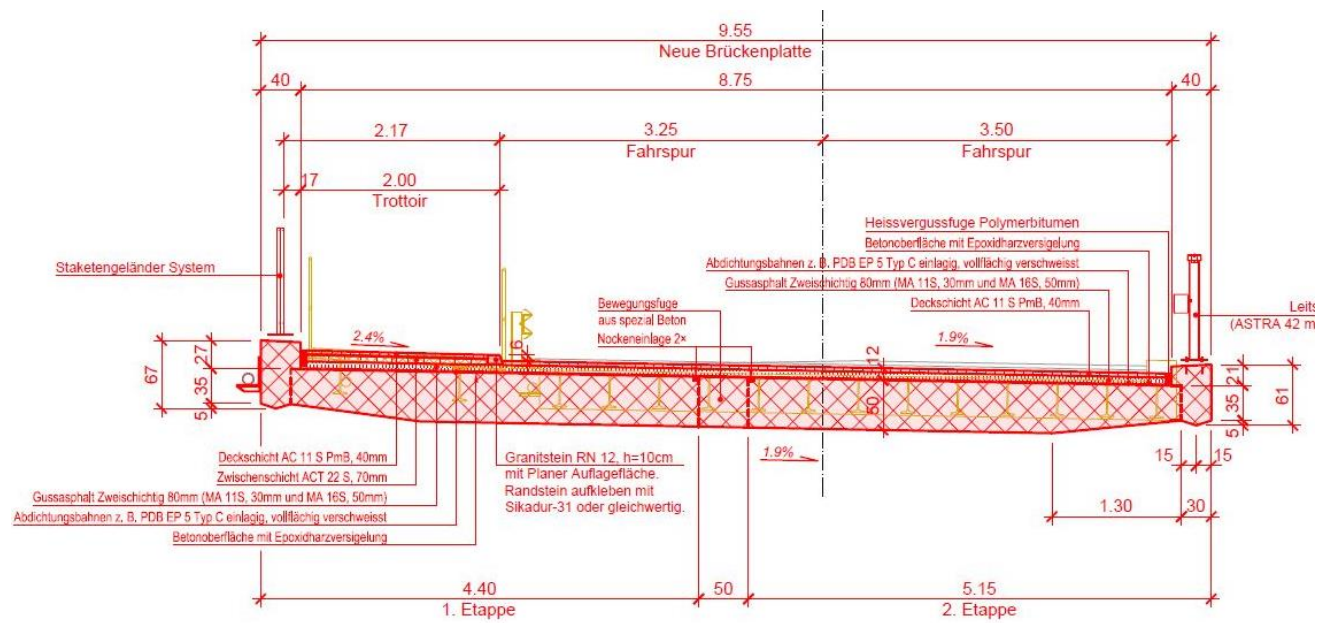


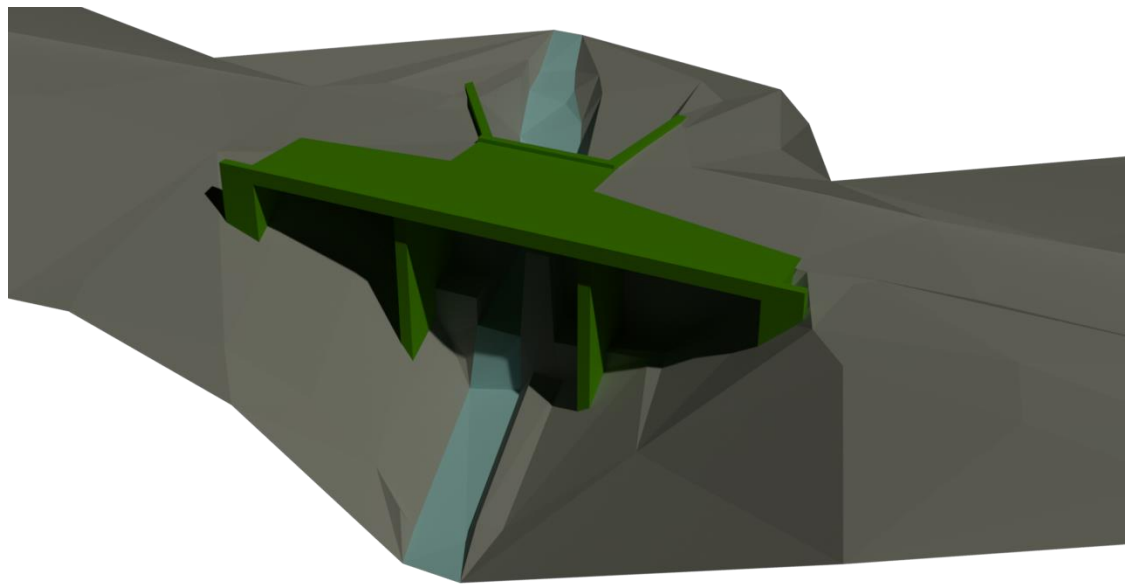
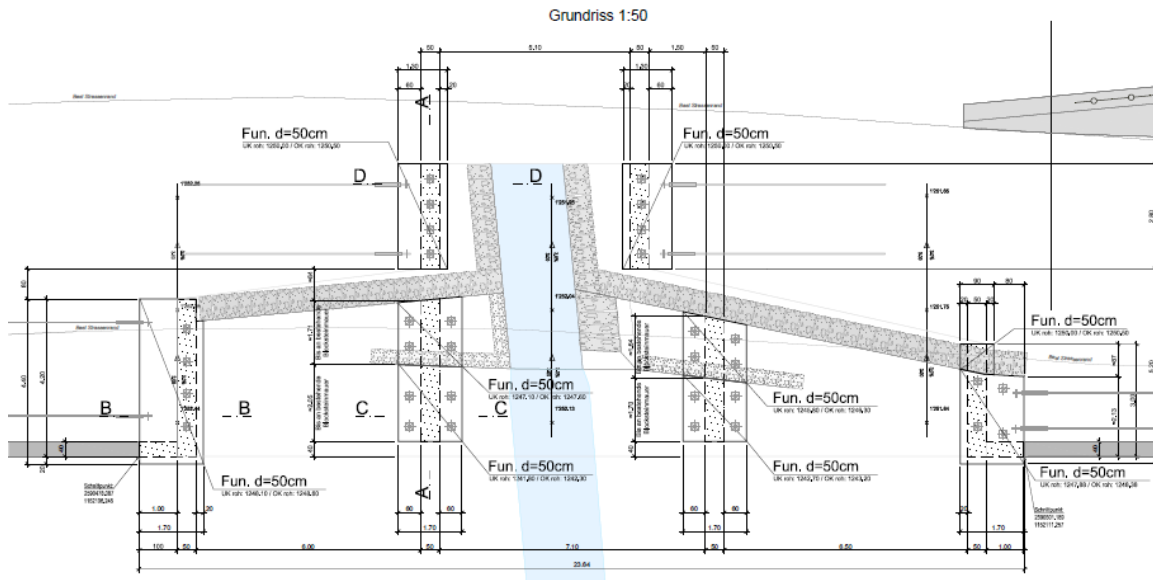


# Brückenbau / Kunstbauten

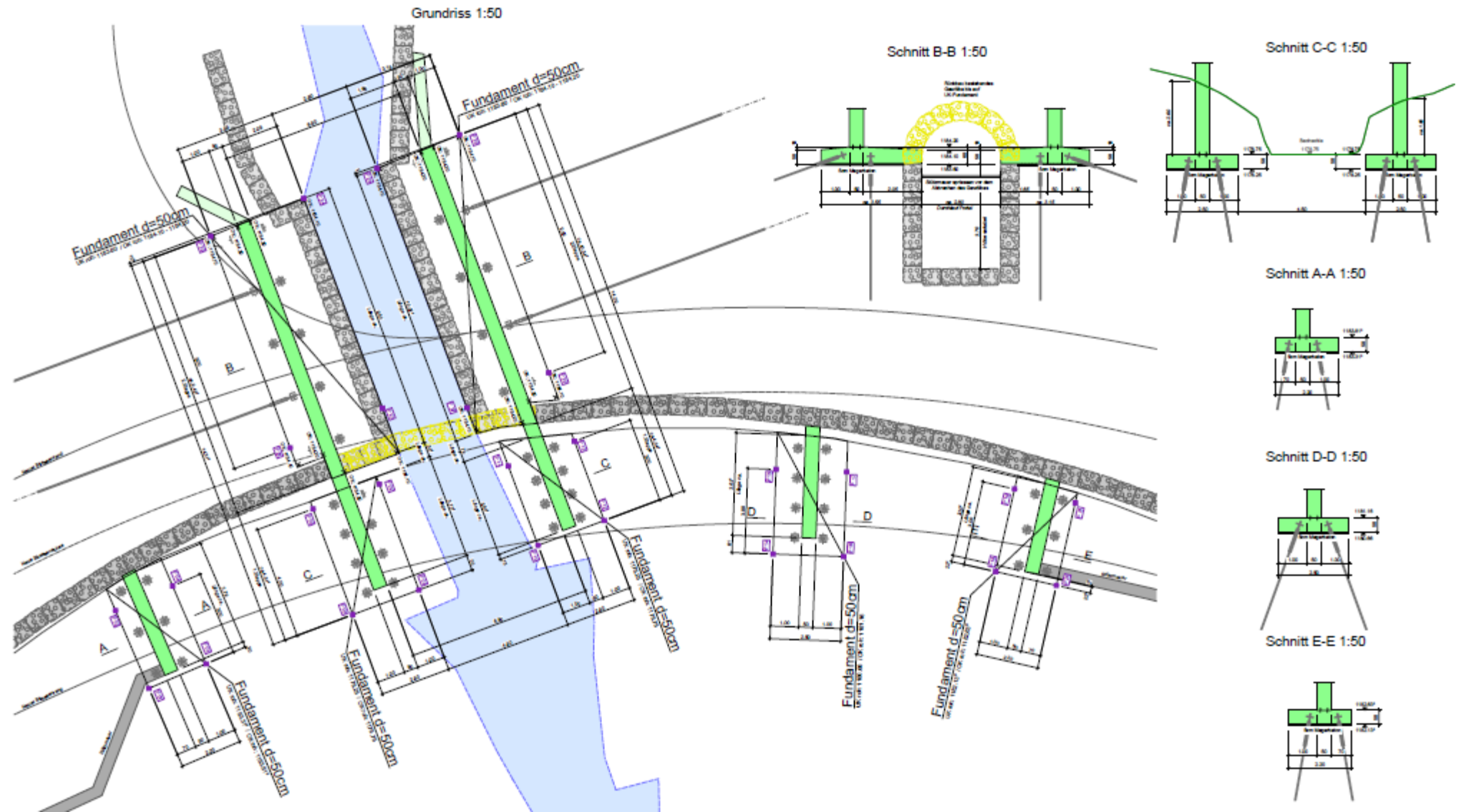














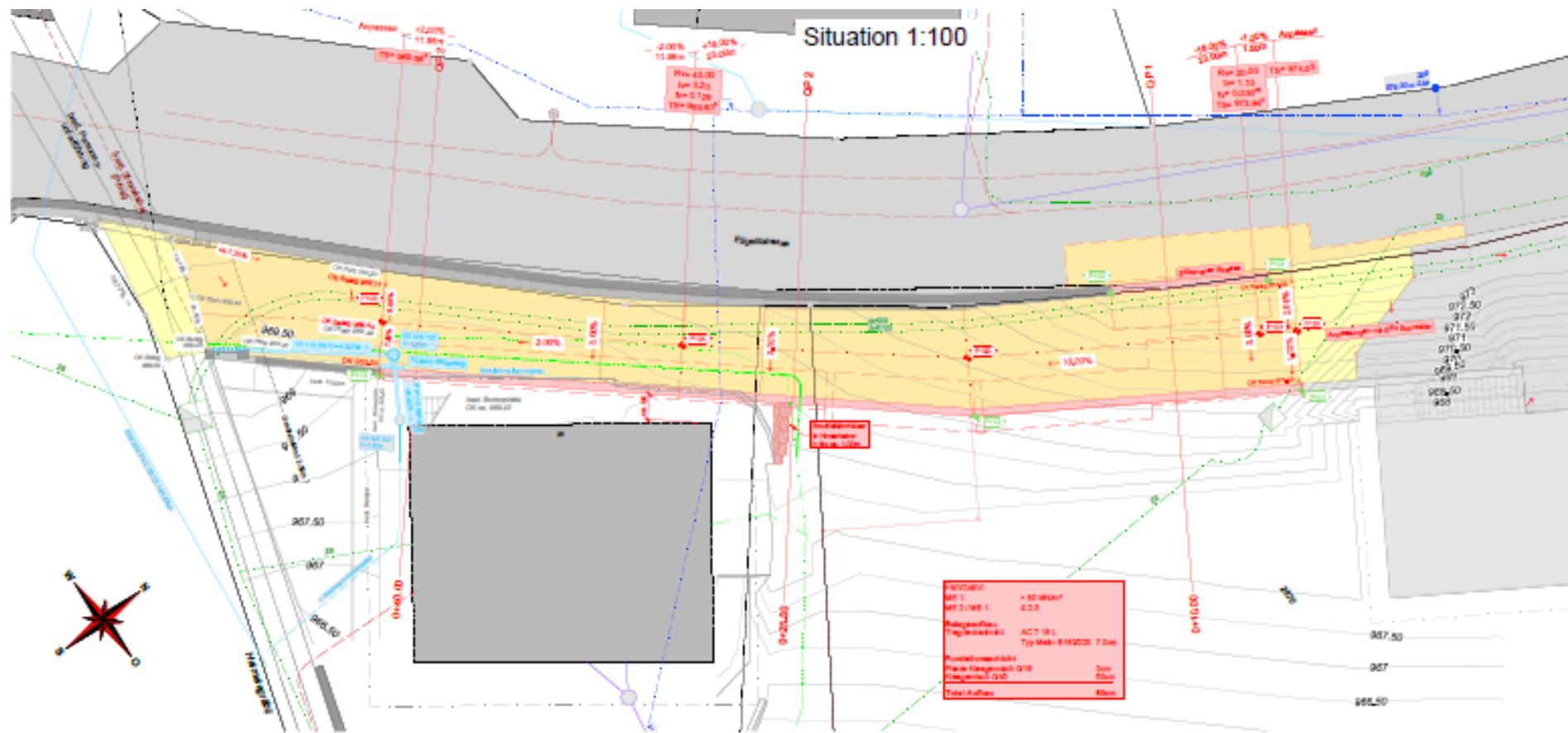










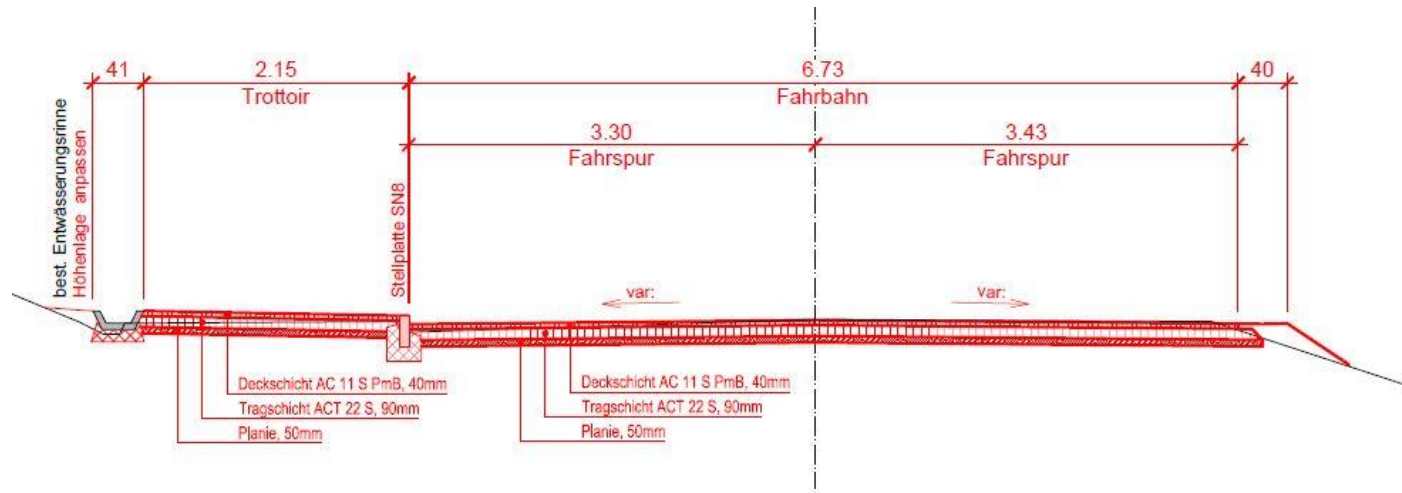




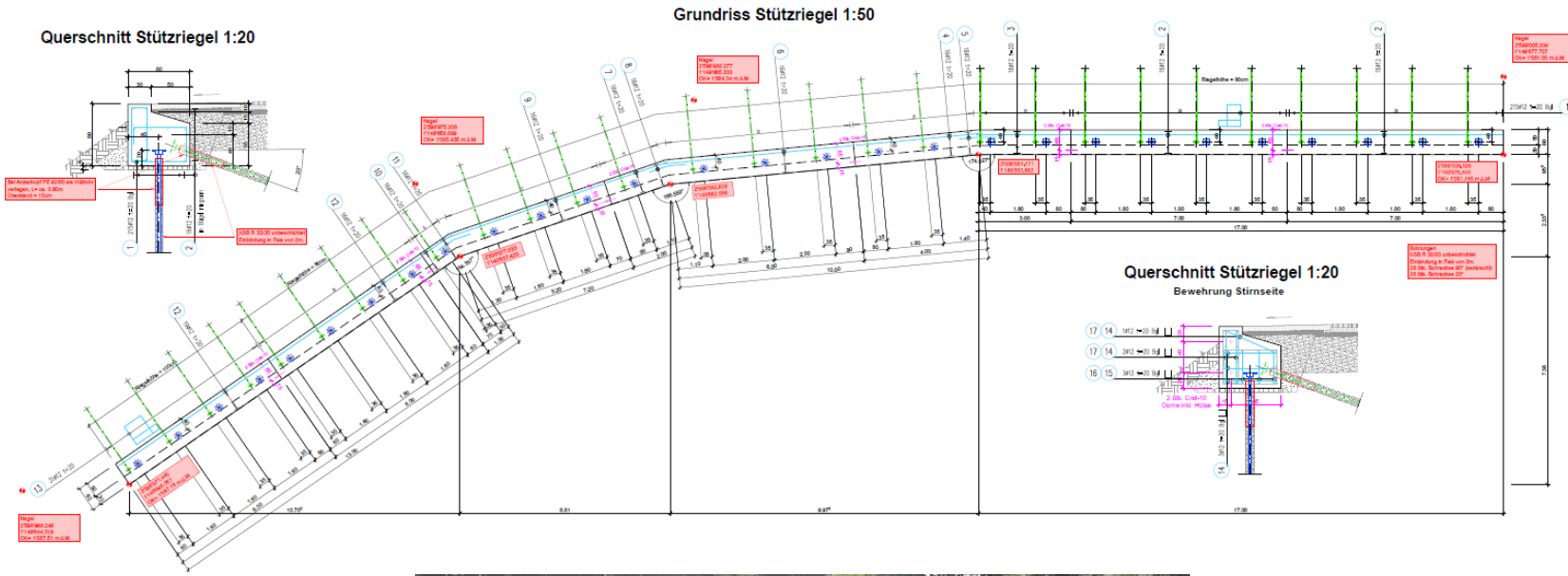


# Strassenbau







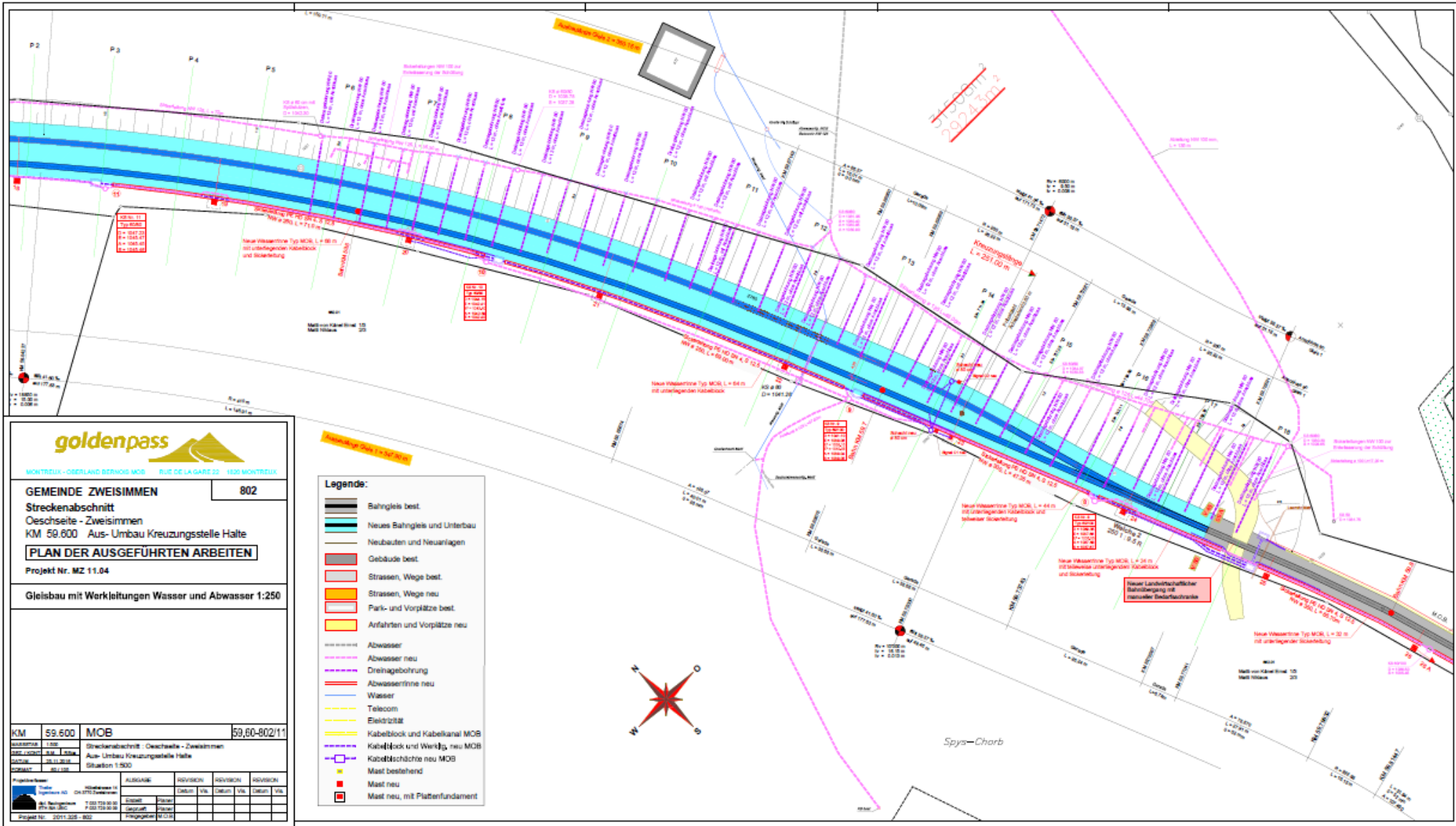


Fermelstrasse, Matten (St. Stephan)

# Bahnbau













# Bergbahnen





**Theiler Ingenieure AG**  
 39641 Weiskirchen  
 674 64 000

Hohlkasten 14, CH-3710 Zweisimmen, Tel. 052 726 01 00, Fax 052 726 01 09, www.theiler.ch, info@theiler.ch

Bergbahnen Destination Gondel AG Einzelbauwerk Stütze 15  
 SB LENGENBRAND - PARWENGENSATTEL

**Bewehrung**  
 Grundriss 1:50 / 1/20, Schnitt 1:20

Proj. Nr. 2018.317/004A

Von	Bis	Objekt	Standort	Bauart
01	01	JA	2018/2018	Architektur
02	02	JA	2018/2018	Architektur

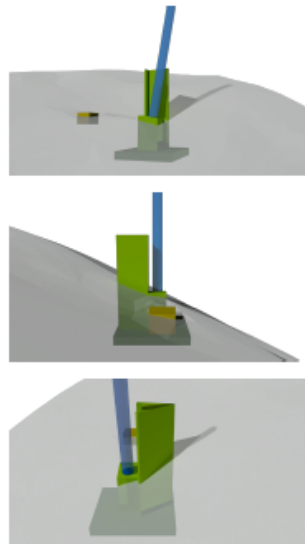
**Beton** gemäss SA 202/2010  
 Betonart: C25/30  
 Bewehrungsarten: Stab A, Stab B, Stab C, Stab D, Stab E, Stab F, Stab G, Stab H, Stab I, Stab J, Stab K, Stab L, Stab M, Stab N, Stab O, Stab P, Stab Q, Stab R, Stab S, Stab T, Stab U, Stab V, Stab W, Stab X, Stab Y, Stab Z, Stab AA, Stab AB, Stab AC, Stab AD, Stab AE, Stab AF, Stab AG, Stab AH, Stab AI, Stab AJ, Stab AK, Stab AL, Stab AM, Stab AN, Stab AO, Stab AP, Stab AQ, Stab AR, Stab AS, Stab AT, Stab AU, Stab AV, Stab AW, Stab AX, Stab AY, Stab AZ, Stab BA, Stab BB, Stab BC, Stab BD, Stab BE, Stab BF, Stab BG, Stab BH, Stab BI, Stab BJ, Stab BK, Stab BL, Stab BM, Stab BN, Stab BO, Stab BP, Stab BQ, Stab BR, Stab BS, Stab BT, Stab BU, Stab BV, Stab BW, Stab BX, Stab BY, Stab BZ, Stab CA, Stab CB, Stab CC, Stab CD, Stab CE, Stab CF, Stab CG, Stab CH, Stab CI, Stab CJ, Stab CK, Stab CL, Stab CM, Stab CN, Stab CO, Stab CP, Stab CQ, Stab CR, Stab CS, Stab CT, Stab CU, Stab CV, Stab CW, Stab CX, Stab CY, Stab CZ, Stab DA, Stab DB, Stab DC, Stab DD, Stab DE, Stab DF, Stab DG, Stab DH, Stab DI, Stab DJ, Stab DK, Stab DL, Stab DM, Stab DN, Stab DO, Stab DP, Stab DQ, Stab DR, Stab DS, Stab DT, Stab DU, Stab DV, Stab DW, Stab DX, Stab DY, Stab DZ, Stab EA, Stab EB, Stab EC, Stab ED, Stab EE, Stab EF, Stab EG, Stab EH, Stab EI, Stab EJ, Stab EK, Stab EL, Stab EM, Stab EN, Stab EO, Stab EP, Stab EQ, Stab ER, Stab ES, Stab ET, Stab EU, Stab EV, Stab EW, Stab EX, Stab EY, Stab EZ, Stab FA, Stab FB, Stab FC, Stab FD, Stab FE, Stab FF, Stab FG, Stab FH, Stab FI, Stab FJ, Stab FK, Stab FL, Stab FM, Stab FN, Stab FO, Stab FP, Stab FQ, Stab FR, Stab FS, Stab FT, Stab FU, Stab FV, Stab FW, Stab FX, Stab FY, Stab FZ, Stab GA, Stab GB, Stab GC, Stab GD, Stab GE, Stab GF, Stab GG, Stab GH, Stab GI, Stab GJ, Stab GK, Stab GL, Stab GM, Stab GN, Stab GO, Stab GP, Stab GQ, Stab GR, Stab GS, Stab GT, Stab GU, Stab GV, Stab GW, Stab GX, Stab GY, Stab GZ, Stab HA, Stab HB, Stab HC, Stab HD, Stab HE, Stab HF, Stab HG, Stab HH, Stab HI, Stab HJ, Stab HK, Stab HL, Stab HM, Stab HN, Stab HO, Stab HP, Stab HQ, Stab HR, Stab HS, Stab HT, Stab HU, Stab HV, Stab HW, Stab HX, Stab HY, Stab HZ, Stab IA, Stab IB, Stab IC, Stab ID, Stab IE, Stab IF, Stab IG, Stab IH, Stab II, Stab IJ, Stab IK, Stab IL, Stab IM, Stab IN, Stab IO, Stab IP, Stab IQ, Stab IR, Stab IS, Stab IT, Stab IU, Stab IV, Stab IW, Stab IX, Stab IY, Stab IZ, Stab JA, Stab JB, Stab JC, Stab JD, Stab JE, Stab JF, Stab JG, Stab JH, Stab JI, Stab JJ, Stab JK, Stab JL, Stab JM, Stab JN, Stab JO, Stab JP, Stab JQ, Stab JR, Stab JS, Stab JT, Stab JU, Stab JV, Stab JW, Stab JX, Stab JY, Stab JZ, Stab KA, Stab KB, Stab KC, Stab KD, Stab KE, Stab KF, Stab KG, Stab KH, Stab KI, Stab KJ, Stab KK, Stab KL, Stab KM, Stab KN, Stab KO, Stab KP, Stab KQ, Stab KR, Stab KS, Stab KT, Stab KU, Stab KV, Stab KW, Stab KX, Stab KY, Stab KZ, Stab LA, Stab LB, Stab LC, Stab LD, Stab LE, Stab LF, Stab LG, Stab LH, Stab LI, Stab LJ, Stab LK, Stab LL, Stab LM, Stab LN, Stab LO, Stab LP, Stab LQ, Stab LR, Stab LS, Stab LT, Stab LU, Stab LV, Stab LW, Stab LX, Stab LY, Stab LZ, Stab MA, Stab MB, Stab MC, Stab MD, Stab ME, Stab MF, Stab MG, Stab MH, Stab MI, Stab MJ, Stab MK, Stab ML, Stab MM, Stab MN, Stab MO, Stab MP, Stab MQ, Stab MR, Stab MS, Stab MT, Stab MU, Stab MV, Stab MW, Stab MX, Stab MY, Stab MZ, Stab NA, Stab NB, Stab NC, Stab ND, Stab NE, Stab NF, Stab NG, Stab NH, Stab NI, Stab NJ, Stab NK, Stab NL, Stab NM, Stab NN, Stab NO, Stab NP, Stab NQ, Stab NR, Stab NS, Stab NT, Stab NU, Stab NV, Stab NW, Stab NX, Stab NY, Stab NZ, Stab OA, Stab OB, Stab OC, Stab OD, Stab OE, Stab OF, Stab OG, Stab OH, Stab OI, Stab OJ, Stab OK, Stab OL, Stab OM, Stab ON, Stab OO, Stab OP, Stab OQ, Stab OR, Stab OS, Stab OT, Stab OU, Stab OV, Stab OW, Stab OX, Stab OY, Stab OZ, Stab PA, Stab PB, Stab PC, Stab PD, Stab PE, Stab PF, Stab PG, Stab PH, Stab PI, Stab PJ, Stab PK, Stab PL, Stab PM, Stab PN, Stab PO, Stab PP, Stab PQ, Stab PR, Stab PS, Stab PT, Stab PU, Stab PV, Stab PW, Stab PX, Stab PY, Stab PZ, Stab QA, Stab QB, Stab QC, Stab QD, Stab QE, Stab QF, Stab QG, Stab QH, Stab QI, Stab QJ, Stab QK, Stab QL, Stab QM, Stab QN, Stab QO, Stab QP, Stab QQ, Stab QR, Stab QS, Stab QT, Stab QU, Stab QV, Stab QW, Stab QX, Stab QY, Stab QZ, Stab RA, Stab RB, Stab RC, Stab RD, Stab RE, Stab RF, Stab RG, Stab RH, Stab RI, Stab RJ, Stab RK, Stab RL, Stab RM, Stab RN, Stab RO, Stab RP, Stab RQ, Stab RR, Stab RS, Stab RT, Stab RU, Stab RV, Stab RW, Stab RX, Stab RY, Stab RZ, Stab SA, Stab SB, Stab SC, Stab SD, Stab SE, Stab SF, Stab SG, Stab SH, Stab SI, Stab SJ, Stab SK, Stab SL, Stab SM, Stab SN, Stab SO, Stab SP, Stab SQ, Stab SR, Stab SS, Stab ST, Stab SU, Stab SV, Stab SW, Stab SX, Stab SY, Stab SZ, Stab TA, Stab TB, Stab TC, Stab TD, Stab TE, Stab TF, Stab TG, Stab TH, Stab TI, Stab TJ, Stab TK, Stab TL, Stab TM, Stab TN, Stab TO, Stab TP, Stab TQ, Stab TR, Stab TS, Stab TT, Stab TU, Stab TV, Stab TW, Stab TX, Stab TY, Stab TZ, Stab UA, Stab UB, Stab UC, Stab UD, Stab UE, Stab UF, Stab UG, Stab UH, Stab UI, Stab UJ, Stab UK, Stab UL, Stab UM, Stab UN, Stab UO, Stab UP, Stab UQ, Stab UR, Stab US, Stab UT, Stab UY, Stab UZ, Stab VA, Stab VB, Stab VC, Stab VD, Stab VE, Stab VF, Stab VG, Stab VH, Stab VI, Stab VJ, Stab VK, Stab VL, Stab VM, Stab VN, Stab VO, Stab VP, Stab VQ, Stab VR, Stab VS, Stab VT, Stab VU, Stab VV, Stab VW, Stab VX, Stab VY, Stab VZ, Stab WA, Stab WB, Stab WC, Stab WD, Stab WE, Stab WF, Stab WG, Stab WH, Stab WI, Stab WJ, Stab WK, Stab WL, Stab WM, Stab WN, Stab WO, Stab WP, Stab WQ, Stab WR, Stab WS, Stab WT, Stab WU, Stab WV, Stab WW, Stab WX, Stab WY, Stab WZ, Stab XA, Stab XB, Stab XC, Stab XD, Stab XE, Stab XF, Stab XG, Stab XH, Stab XI, Stab XJ, Stab XK, Stab XL, Stab XM, Stab XN, Stab XO, Stab XP, Stab XQ, Stab XR, Stab XS, Stab XT, Stab XU, Stab XV, Stab XW, Stab XX, Stab XY, Stab XZ, Stab YA, Stab YB, Stab YC, Stab YD, Stab YE, Stab YF, Stab YG, Stab YH, Stab YI, Stab YJ, Stab YK, Stab YL, Stab YM, Stab YN, Stab YO, Stab YP, Stab YQ, Stab YR, Stab YS, Stab YT, Stab YU, Stab YV, Stab YW, Stab YX, Stab YY, Stab YZ, Stab ZA, Stab ZB, Stab ZC, Stab ZD, Stab ZE, Stab ZF, Stab ZG, Stab ZH, Stab ZI, Stab ZJ, Stab ZK, Stab ZL, Stab ZM, Stab ZN, Stab ZO, Stab ZP, Stab ZQ, Stab ZR, Stab ZS, Stab ZT, Stab ZU, Stab ZV, Stab ZW, Stab ZX, Stab ZY, Stab ZZ

**Schalung** gemäss SA 202/2010  
 Schalungstyp: ...  
 Schalungsmaterial: ...

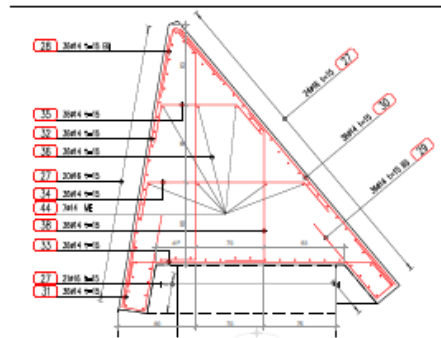
**Bewehrung** gemäss SA 202/2010  
 Bewehrungsarten: ...

Der Unternehmer hat alle Massnahmen zu ergreifen, die die Ausführung der Bewehrung erleichtern zu lassen.  
 Anfertigen und Schützen gemäss spez. Plan nach Angabe Bewehrung.  
 Die Bewehrung ist vom Ingenieur abzunehmen zu lassen.  
 Bewehrung ist dem Bauherrn gemäss Nachtragserklärung vom 08.08.2018.  
 Bewehrungsart: ...  
 Bewehrungsart: ...  
 Bewehrungsart: ...  
 Bewehrungsart: ...

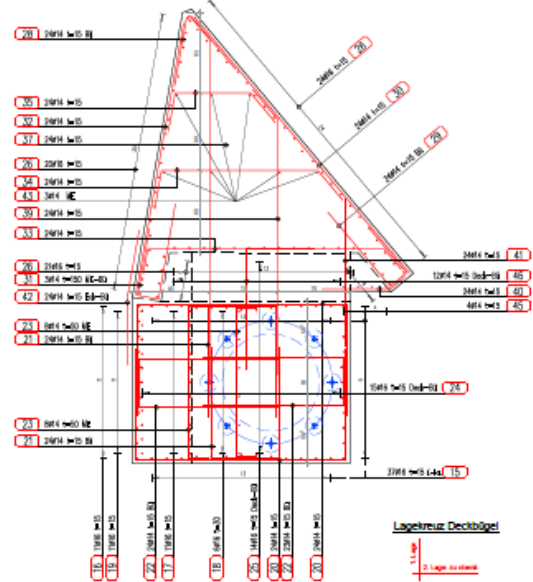
1908.50 m.ü.M. – OK fertig Achspunkt



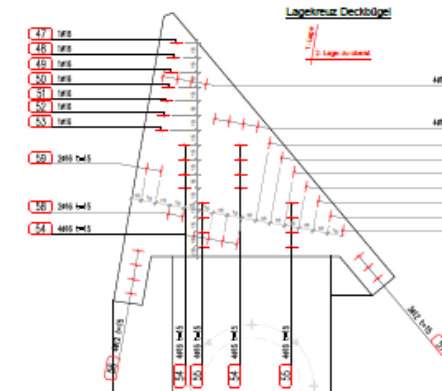
Grundriss 2.Etappe 1:20



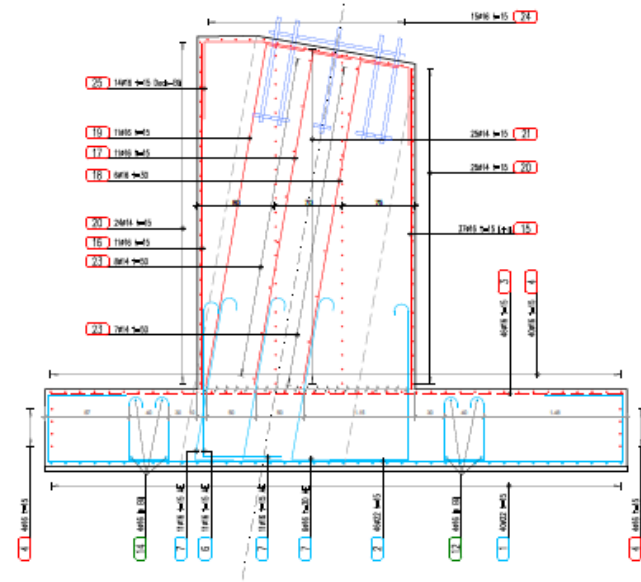
Grundriss 1.Etappe 1:20



Grundriss 2.Etappe Deckbügel 1:20



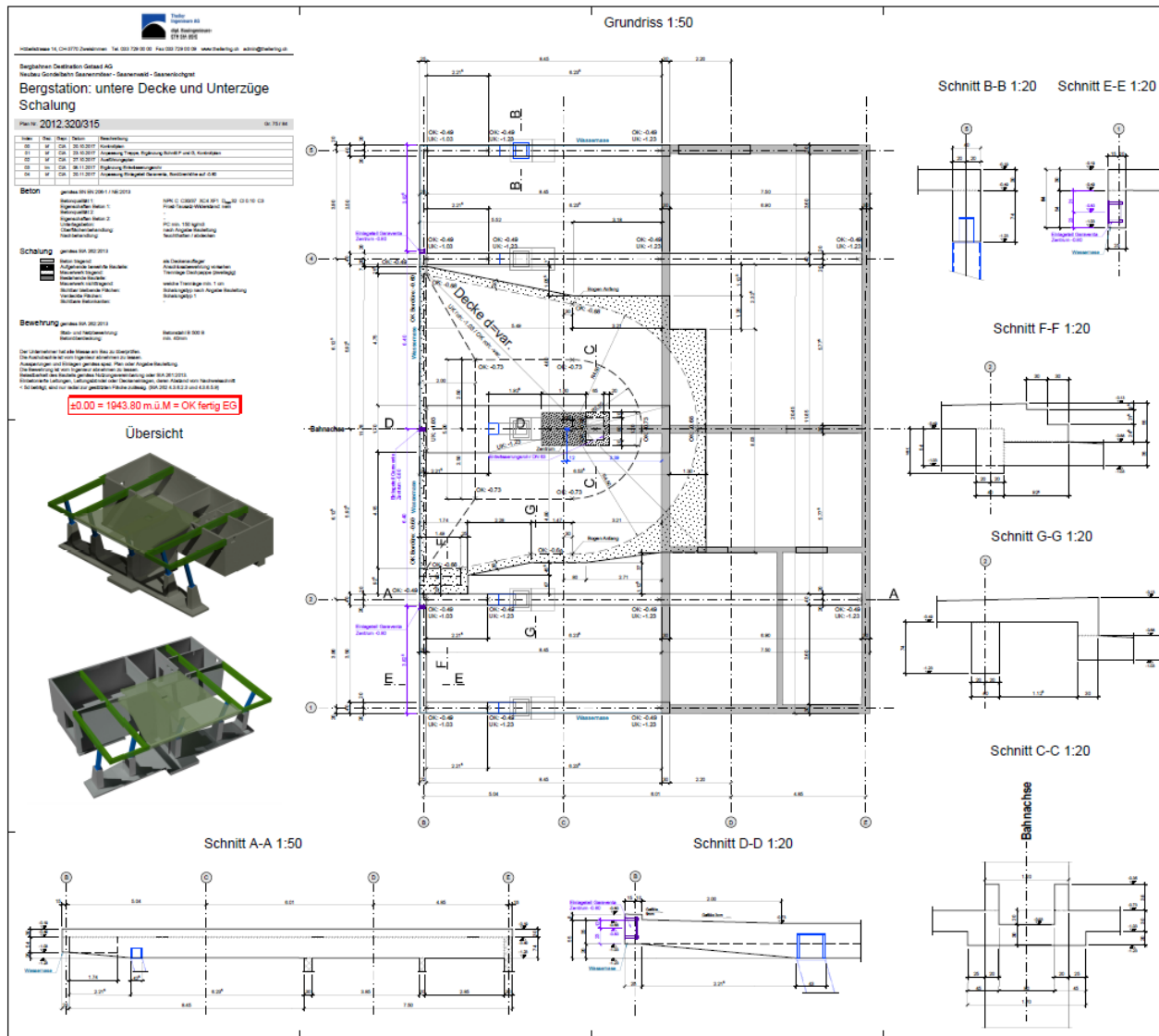
Schnitt Bahnachse 1:20













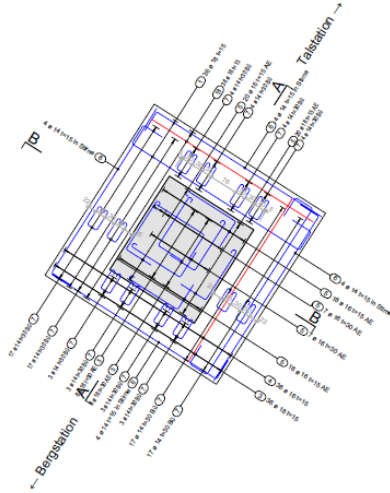




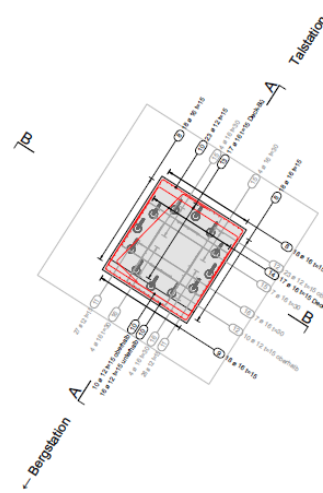




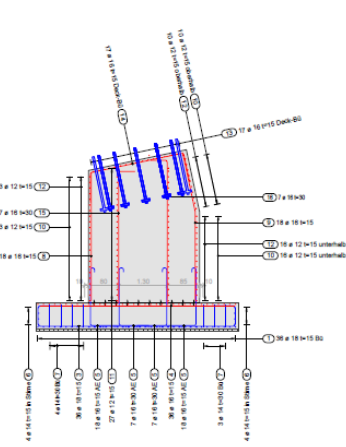
Grundriss Fundament 1:50



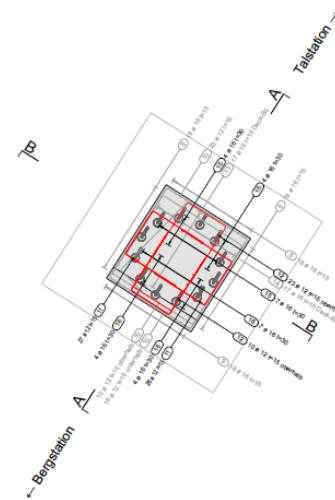
Grundriss Sockel ausserhalb 1:50



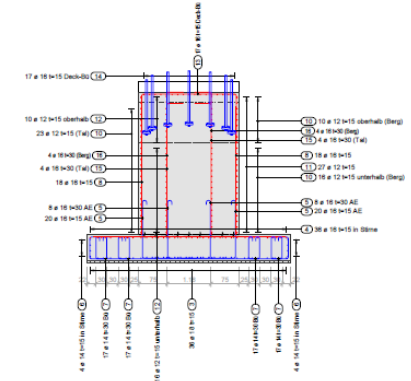
Schnitt A - A Stützenachse 1:50



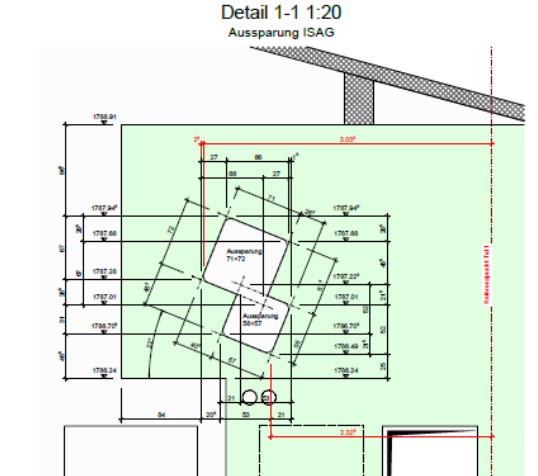
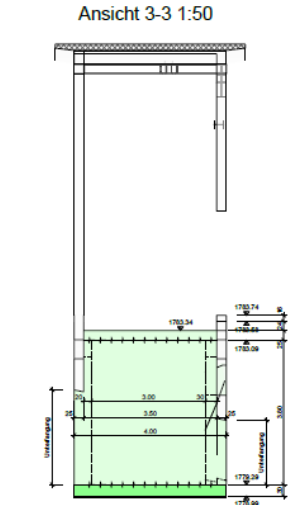
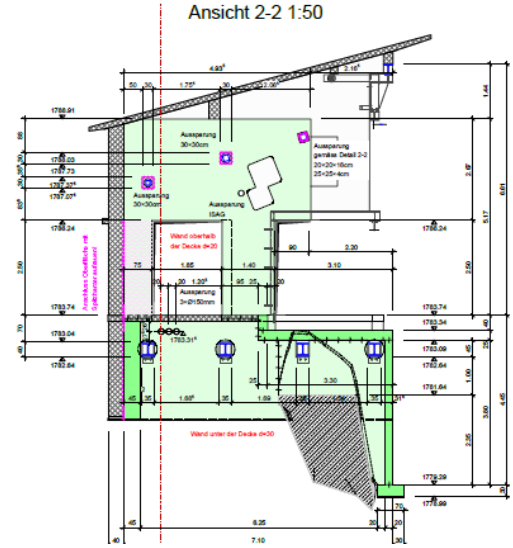
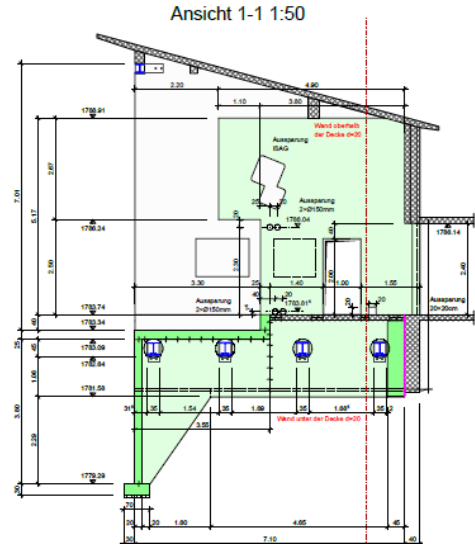
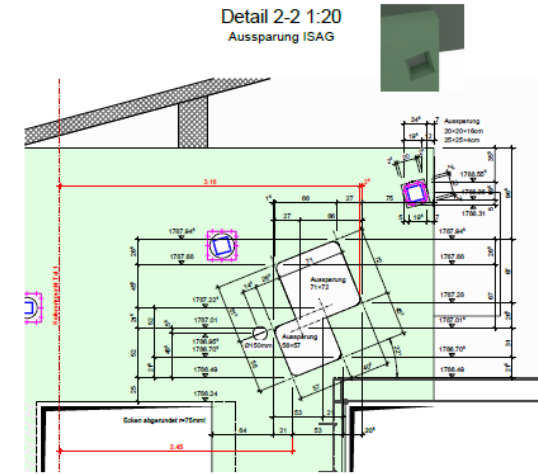
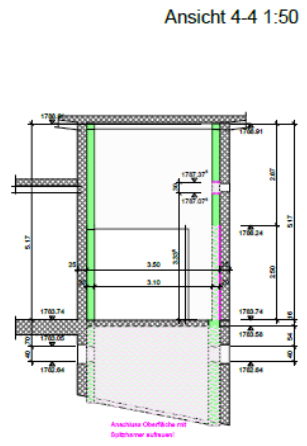
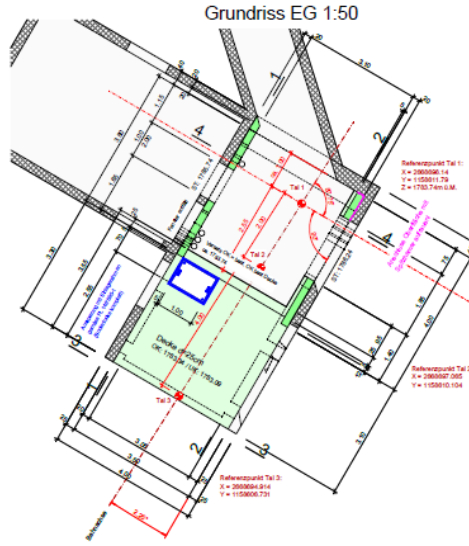
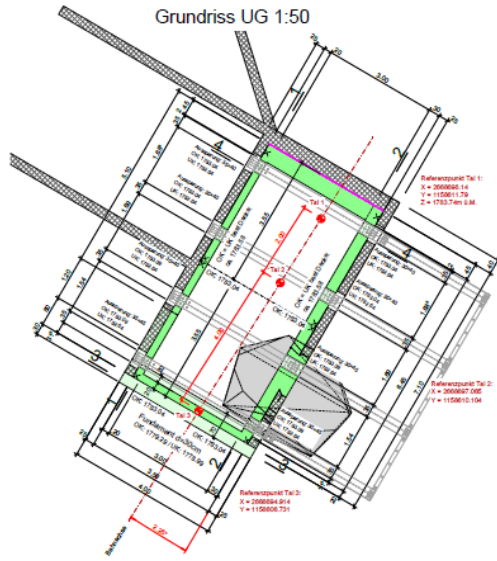
Grundriss Sockel innerhalb 1:50

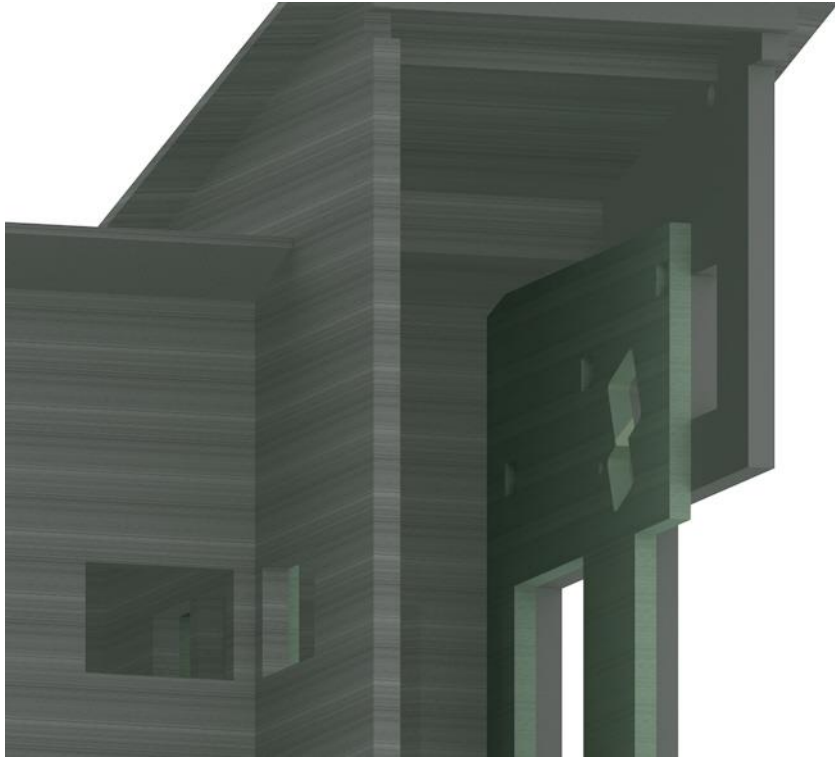


Schnitt B - B M396.41 1:50





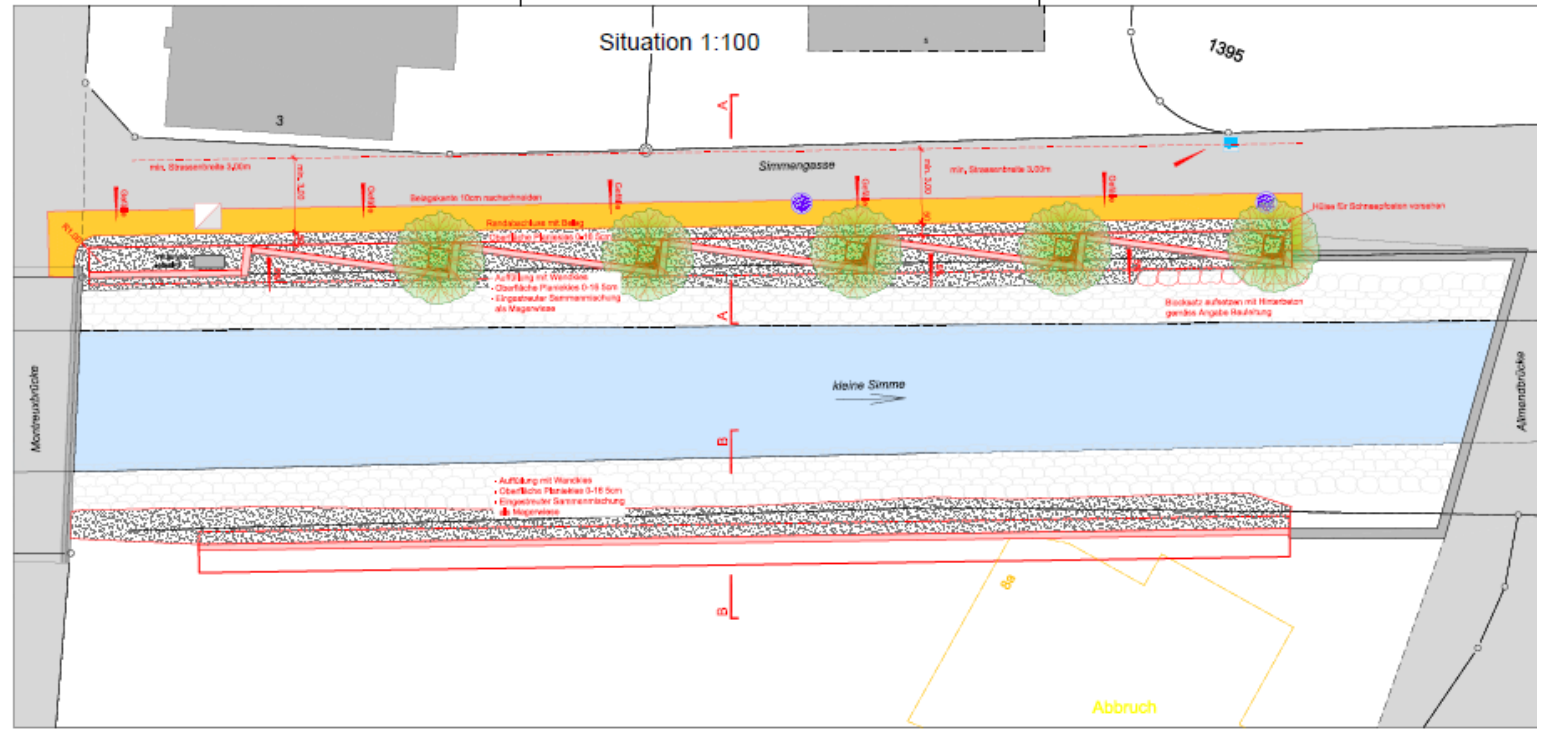




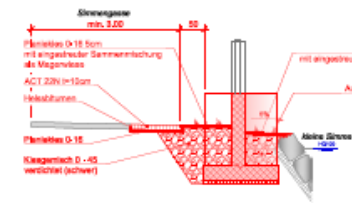


# Wasserbau

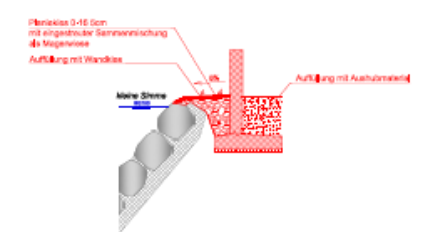




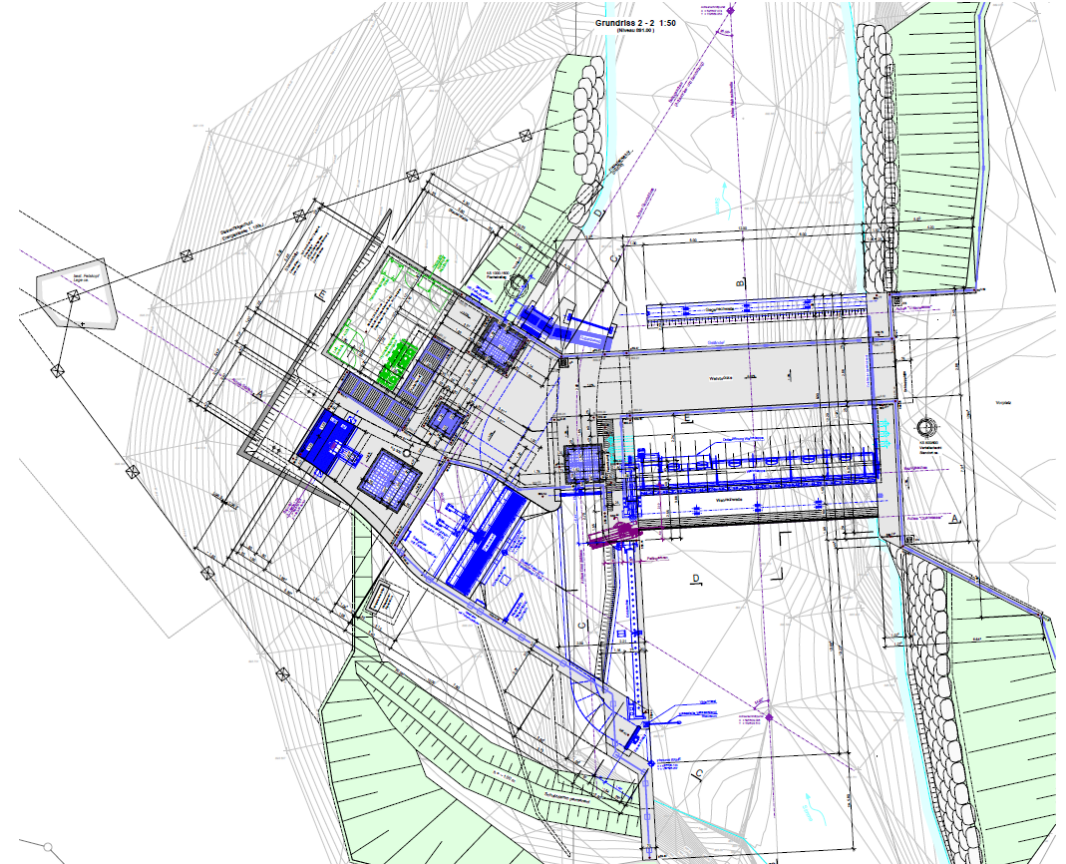
Schnitt A-A 1:50



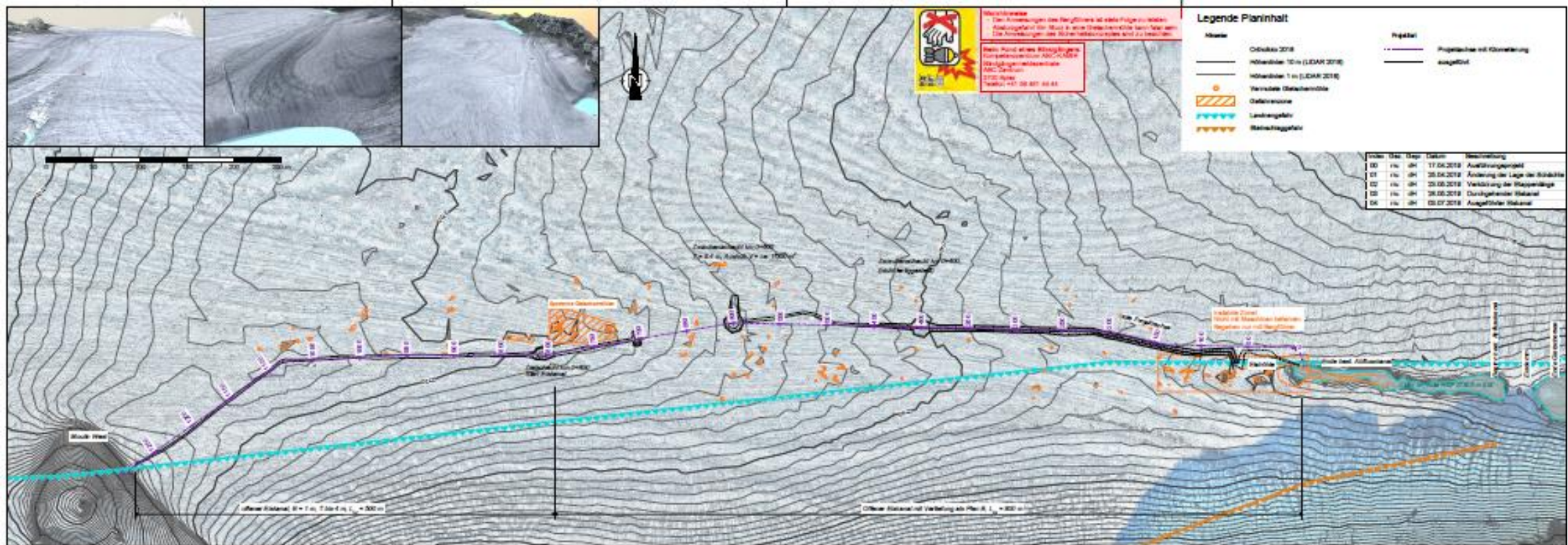
Schnitt B-B 1:50

















# ZeichnerIn Fachrichtung Ingenieurbau Ein Beruf mit vielen Perspektiven